

THERE MUST BE A MINIMUM OF .15" CLEARANCE BETWEEN THE SPRING ROD AND THE BUSHING OR BORE THROUGH THE RETAINER IN ORDER FOR THE RODS TO HAVE ROOM FOR LATERAL MOVEMENT AS THE FRONT FORKS GO THROUGH A FULL SUSPENSION CYCLE.

YOU CAN USE STANDARD PAUGHCO RETAINERS BUT VERIFY ALL DIMENSIONS.

THE RETAINERS SHOULD BE A FIRM PRESS FIT INTO THE SPRING PERCH HOLES. COORDINATE CLEARANCE AND TOLERANCES BETWEEN PARTS AND TYPE OF PLATING TO BE USED

ALUMINUM WAS DELIBERATELY USED FOR RETAINERS SINCE IT DOES NOT PRODUCE THE RATTLING SOUNDS ASSOCIATED WITH STOCK STEEL RETAINERS AND IS SOFTER THEREBY SAVING SPRINGS FROM WEAR. THESE UNITS MAY EVENTUALLY NEED TO BE REPLACED AT 50,000 MILE INTERVALS

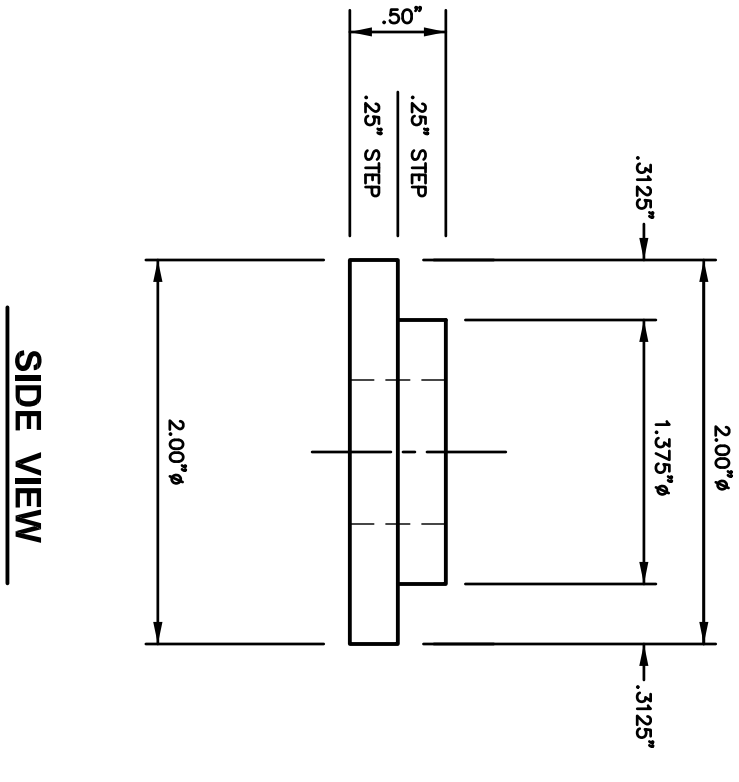
SOME BUILDERS MAY CHOOSE TO USE BRASS BUT BEWARE THAT THEY WILL ALSO CAUSE RATTLING AND THEY WEAR FASTER THAN ALUMINUM.

CHOPPER BUILDERS LLC  
GARY W. WEISHAUP

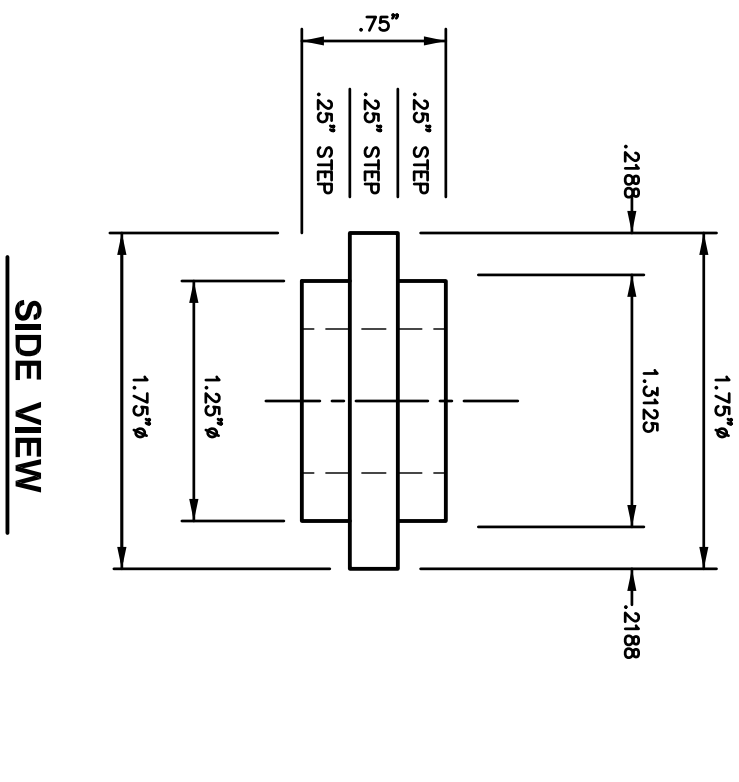
PERFORMANCE ENGINEERING  
CHASSIS FABRICATION  
FLOWBENCH TESTING  
MACHINE WORK  
RESTORATIONS

1400 BUSH BLVD. BLVD.  
NAPA, CA. 94558  
Cell Ph. 707-728-1521  
Email gww25@chopper.com  
http://www.chopper.com  
http://www.silverado.com

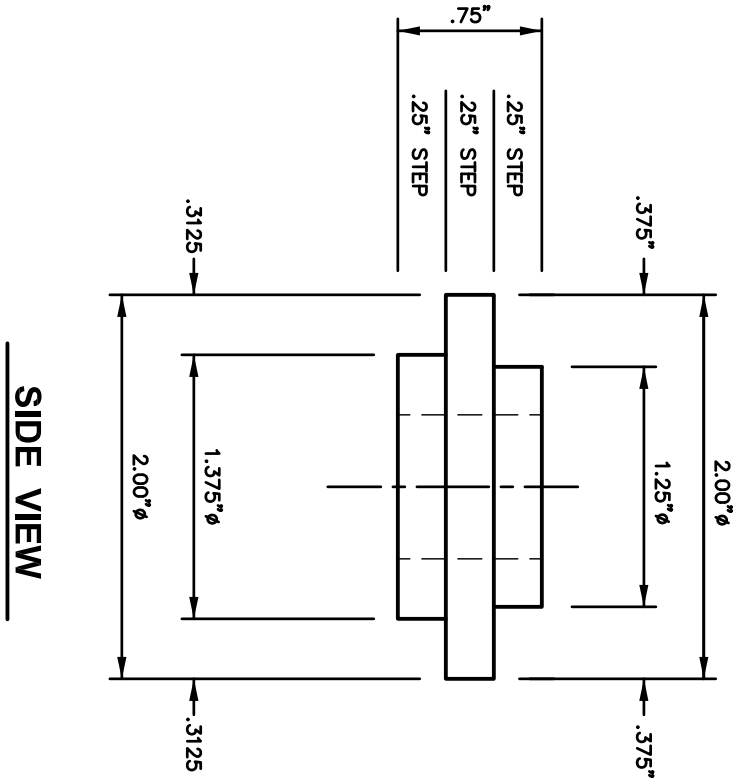
Revision	Date
ORIGINAL, UNAS BUILT/ID WORK	8-21-89
INITIAL, OLD LAYOUT REDRAWN	12-2-89
GENERAL REVISION	8-11-89
GENERAL REVISION	5-17-91
GENERAL REVISION	5-12-12
GENERAL REVISION	3-9-2020
GENERAL REVISION	6-21-2021
*	
*	
*	
*	
Any Pm	



SPRING BRIDGE LOCATOR  
SCALE 1:1  
PART NO. SBL-1  
MIL. 6061 ALUM.



UPPER SPRING PERCH LOCATOR  
SCALE 1:1  
PART NO. SBL-2  
MIL. 6061 ALUM.



LOWER SPRING PERCH LOCATOR  
SCALE 1:1  
PART NO. SBL-3  
MIL. 6061 ALUM.

## FOR SMALL I.D. SPRINGS

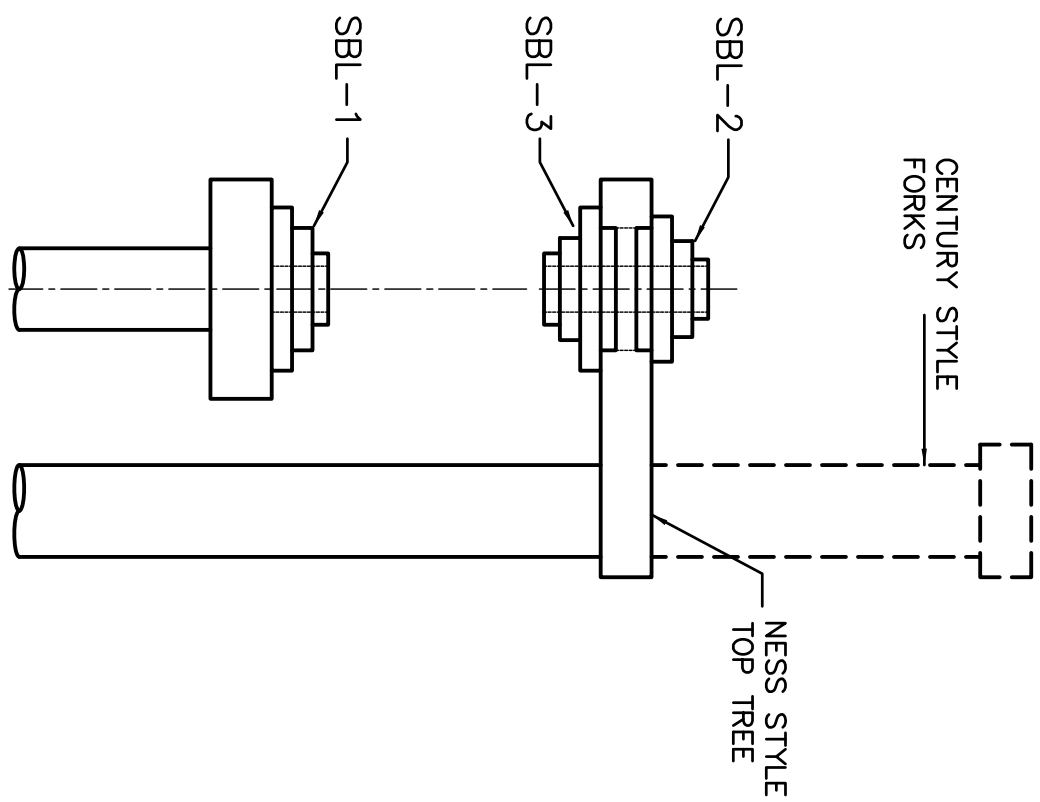
PAUGHCO SPRING #163

## FOR SMALL I.D. SPRINGS

PAUGHCO SPRING #162

## FOR SMALL I.D. SPRINGS

PAUGHCO SPRING #163



Drawn By	GWW
Date	6-21-2021
Checked By	
Date	
Scale	1" = 1"
File No.	
Project No.	
Sheet Description	

## SPRING RETAINERS

## NESS AND NESS CENTURY SPRINGER PARTS

Sheet No.